

Mandatory Disclosure

I. Name of the Institution

- Address including telephone, Fax, e-mail.
Mulshi Institute of Technology and Research, Gut No. 241, 242 & 243, Sambhave, Mulshi, Pune 412108
Phone : (020) 65005452/53 Fax: (020) 25899966
E Mail: mitr_pune@rediffmail.com
admin@mitrpune.org

II. Name & Address of the Principal

- Address including telephone, Fax, e-mail.
Prof. Dr. D. K. Biswas
Kannak Villa, 7 Loyola School Area
Jamshedpur 831001
Tel. No. 0657- 2228935
e-mail: dilipbiswas@rediffmail.com
dilip.biswas@mitrpune.org

III. Name of the Affiliating University

University of Pune
7, Ganeshkhind, Pune

IV. Governance

- ❖ Members of the Board and their brief background

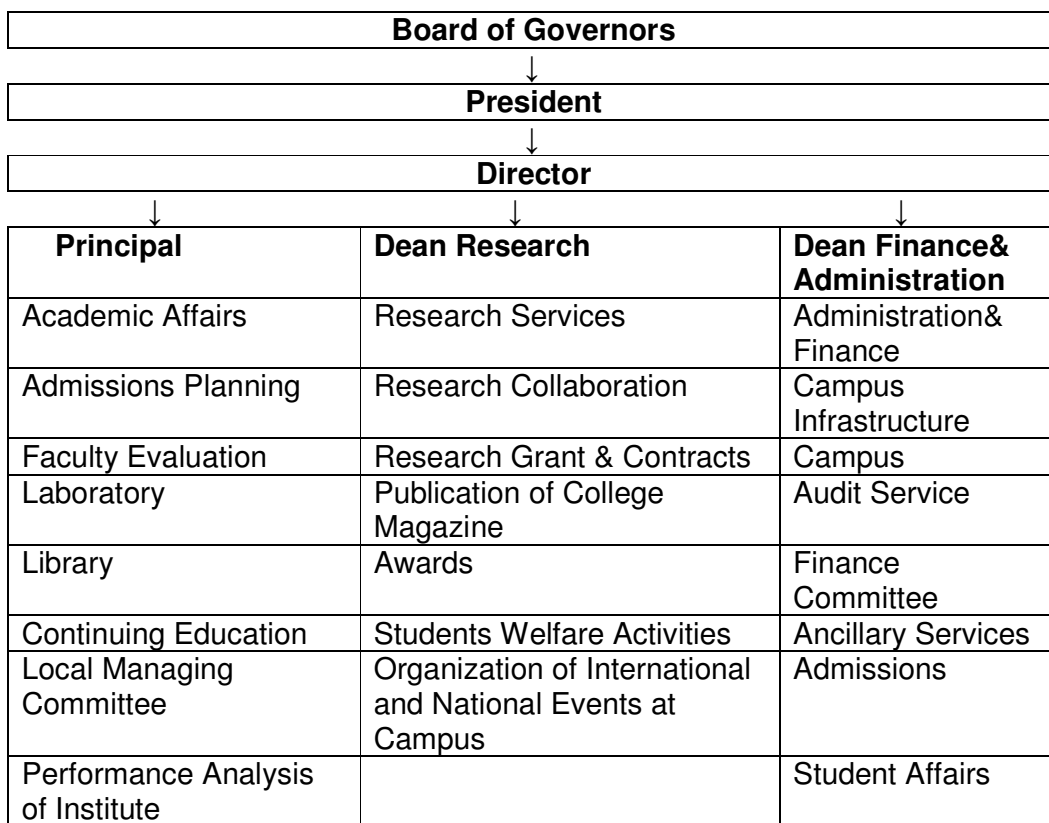
Sr. No.	Name of the Trustee	Membership
01	Dr. Pramod Kumar President, International School of Business & Media, Pune	President
02	Dr. S. R. Asthana Sr. Scientist, E-II, National Chemical Laboratory, Pune	Secretary
03	Dr. L. G. Navale Principal, Cusrow Wadia College of Engg. Pune	Treasurer
04	Dr. P. Mahanta Professor & Head, Center of Energy, Department of Mechanical Engg. Department, IIT Guwahati	Member
05	Prof. R. S. Agarval Ray W Heric Chair Professor Mechanical Engg. Department, IIT Delhi	Member
06	Mr. R. S. Chopra Managing Director, Piaggio Greaves Vehicles Ltd.	Member
07	Dr. A.S. Pande Vice President- Corporation Planning & Strategy, Hero Honda Motors Limited	Member
08	Dr. Y. V. Verma Director HR & Ms, HR Depatment, LG Electronics India Pvt. Ltd.	Member
09	Dr. D. K. Biswas Former Deputy Director at National Metallurgical Laboratory, Jamshedpur.	Principal & Member Secretary

❖ Members of Academic Advisory Body

Sr. No.	Name	Designation
01	Dr. Pramod Kumar President-International School of Business & Media, Pune	President
02	Dr. Saroja Asthana Sr. Scientist, E-II, National Chemical Laboratory, Pune	Secretary
03	Dr. L.G. Navale Principal, Cusrow Wadia College of Engineering, Pune.	Treasurer
04	Dr. Y. V. Verma Director HR & Ms, HR Department, LG Electronics India Pvt. Ltd.	Member-Industry
05	Mr. R. S. Chopra Managing Director, Piaggio Greaves Vehicles Ltd.	Member-Industry
06	Prof. R.K. Patil Asstt. Professor-Mechanical, MITR, Pune	Member-Teaching staff
07	Prof. Ms. Priti Ruikar Lecturer-Electrical, MITR, Pune	Member-Teaching staff
08	Mr. D.T. Wagh Lab. Assistant, MITR, Pune	Member-Non-teaching
09	Dr. D.K. Biswas Principal, MITR, Pune	Member Secretary

- ❖ Frequency of the Board Meetings and Academic Advisory Body
- **Twice in a year (January & August)**

❖ Organizational chart and processes



❖ Nature and Extent of involvement of faculty and students in academic affairs/improvements

Regular meetings will be held between Principal, Heads of Departments and Faculty Members as well as Student Class Representatives that will provide the platform for positive interactions and involvement of faculty and students to improve academic processes.

Elected Student Council in connection with University Act will also directly hold meetings with Principal and conveys their views on academics, sports, cultural and organizational matters.

❖ Mechanism/Norms & Procedure for democratic/good Governance

Conventional Organizational structure provides enough opportunities to convey the views and opinions of majority of faculty / staff and students. In addition departmental faculty groups and student council will have complete freedom to directly interact with Principal regarding improvements and governances.

- ❖ Student Feedback on Institutional Governance/faculty performance

Feed Back from students on over all institutional governance and faculty performance will be taken once in a semester. In addition student feed back on individual faculties for their performance in classrooms and laboratories will also be obtained and analyzed, from time to time.

- ❖ Grievance redressal mechanism for faculty, staff and students

In normal situation respective heads of departments can make their own arrangements to redress grievances of faculty, staff and student under their own department. Students will also be allowed to air their grievances through student council on extremely sensitive and important matters.

V. PROGRAMMES

- ❖ Name of the Programmes approved by the AICTE
 - **Four year Under Graduate Engineering Courses**
 - 1) **Mechanical Engineering**
 - 2) **E & TC Engineering**
 - 3) **Computer Engineering**
 - 4) **Information Technology**

- ❖ Name of the Programmes accredited by the AICTE
 - **Not applicable yet.**

- ❖ For each Programme the following details are to be given:

Name	Number of seats	Duration (Years)	Fee in Rs.	Cut off mark/rank	Placement Facilities
Mechanical Engineering	60	4	36000	New Engg. College Starting from 2008-2009	New Engg. College Starting from 2008-2009
Electronics & Telecommunication	60	4	36000		
Computer Engineering	60	4	36000		
Information Technology	60	4	36000		

- ❖ Name and duration of programme(s) having affiliation/collaboration with Foreign University(s)/Institution(s) and being run in the same Campus along with status of their AICTE approval. If there is foreign collaboration, give the following details:

- **No affiliation / collaboration with Foreign University**

- ❖ For each Collaborative/affiliated Programme give the following:

- **Not Applicable**

- ❖ Whether the Collaborative Programme is approved by AICTE? If not whether the Domestic/Foreign Institution has applied to AICTE for approval as required under notification no. 37-3/Legal/2005

Name	
------	--

dated 16th May, 2005

- **Not Applicable**

VI. FACULTY

- ❖ Branch wise list faculty members: (**Annexure -1.1**)

- Permanent Faculty : 20
- Visiting Faculty : --
- Adjunct Faculty : --
- Guest Faculty : --
- Permanent Faculty: Student Ratio : 1:12

- ❖ Number of faculty employed and left during the last three years :
Employed during Last Three years: --

(New Engg. College Starting from 2008-2009)

VII. PROFILE OF DIRECTOR/PRINCIPAL WITH QUALIFICATIONS, TOTAL EXPERIENCE, AGE AND DURATION OF EMPLOYMENT AT THE INSTITUTE CONCERNED

Name Dr. Dilip Kumar Biswas

Date of Birth 01/11/1944

Educational Qualification Ph. D Mechanical

Work Experience

- Teaching -24 years
- Research & Industry -34 years

Area of Specializations Mechanical

Subjects teaching at Post Graduate Level : Tribology

No. of papers published in

- National Journals : 14
- International Journals : 06
- Patents : 05
- No. of Books published with details : 01

VIII. FEE

- ❖ Details of fee, as approved by State fee Committee, for the Institution.
 - **Provisional adhoc fee Rs. 36000/-**
(As per Shikshan Shulk Samittee Letter No. SSS(H&T)/19th June/Adhoc/2008-09/2730 dated 4th July 2008)

- ❖ Time schedule for payment of fee for the entire programme.
 - **At the time of admission and as per the directives by DTE.**

- ❖ No. of Fee waivers granted with amount and name of students.
 - **Nil**

- ❖ Number of scholarship offered by the institute, duration and amount
 - **Nil**

- ❖ Criteria for fee waivers/scholarship.
 - **Not applicable**

- ❖ Estimated cost of Boarding and Lodging in Hostels.
 - **Rs. 25000/- for one academic year.**

IX. ADMISSION

- ❖ Number of seats sanctioned with the year of approval.
 - **240 intakes as per the following table.**
 - **Approval for the year 2008-09 as per AICTE Letter No. F No.06/07/MS/Engg./2008/37 dated June 30, 2008.**

Sr. No.	Name of Course	Intake				
		FE	SE	TE	BE	Total
1	B.E. - Mechanical Engineering	60	-	-	-	60
2	B.E. – Electronics & Telecommunication Engineering	60	-	-	-	60
3	B.E. – Computer Engineering	60	-	-	-	60
4	B.E. – Information Technology	60	-	-	-	60
Total						240

- ❖ Number of students admitted under various categories each year in the last three years.
- **Admissions under process. Last date is 15/09/2008.**

Sr. No.	Name of Course	Total Number of Admitted students till CAP-III Round dated 17/08/2008
		FE
1	B.E. - Mechanical Engineering	48
2	B.E. – Electronics & Telecommunication Engineering	42
3	B.E. – Computer Engineering	44
4	B.E. – Information Technology	40
Total		174

- ❖ Number of applications received during last two years for admission under Management Quota / Institute seats and number admitted:
Not Applicable

X. **ADMISSION PROCEDURE**

- ❖ Mention the admission test being followed, name and address of the Test Agency and its URL (website).
 - **i) Conduct CET by Directorate of Technical Education, Mumbai for 65 % Seats**
 - ii) Conduct the AIEEE by CBSC Board, New Delhi, for 15 % seats**
 - iii) 20 % Institutional seats will be filled on merit of CET & AIEEE examination.**
- ❖ Number of seats allotted to different Test Qualified candidates separately [AIEEE/CET (State conducted test/University tests)/Association conducted test]
 - **CET : 65 % ,**
 - **AIEEE : 15 % ,**
 - **Institutional seats (On Merit basis) : 20 %**
- ❖ Calendar for admission against Institutional / vacant seats:
 - **The procedure for admission against Institutional / Vacant seats are carried out as per the guidelines provided by Directorate of Technical Education, through their notification & hand book from time to time.**

XI. CRITERIA AND WEIGHTAGES FOR ADMISSION

- **65 % Seat fill up on the CET Basis, 15 % Seat fill up on the AIEEE level and 20 % Management quota seat fill up on merit cum counseling basis as per guideline given by Directorate of Technical Education.**
- ❖ Describe each criteria with its respective weightages i.e. Admission Test, marks in qualifying examination etc.
- **Students must be qualifying in CET or AIEEE examination**
- ❖ Mention the minimum level of acceptance, if any.
- **PCM Marks 50%, AIEEE Positive Score, MH-CET Appeared**
- ❖ Mention the cut-off levels of percentage & percentile scores of the candidates in the admission test for the last three years:
- **Not Applicable**
- ❖ Display marks scored in Test etc. and in aggregate for all candidates who were admitted.
- **Admissions under process**

**Item No I - XI must be given in information brochure and must be hosted as fixed content in the website of the Institution.
The Website must be dynamically updated with regard to XII–XV.**

Item No XII- XIV will be updated at the time of admission on Website of the institution.

XII. APPLICATION FORM

- ❖ Downloadable application form, with online submission possibilities.

XIII. LIST OF APPLICANTS

- ❖ List of candidates whose applications have been received along with percentile/percentage score for each of the qualifying examination in separate categories for open seats. List of candidates who have applied along with percentage and percentile score for Management quota seats.

XIV. RESULTS OF ADMISSION UNDER MANAGEMENT SEATS/VACANT SEATS

- ❖ Composition of selection team for admission under Management Quota with the brief profiles of members (This information be made available in the public domain after the admission process is over)
- ❖ Score of the individual candidates admitted arranged in order of merit.
- ❖ List of candidates who have been offered admission.
- ❖ Waiting list of the candidates in order of merit to be operative from the last date of joining of the first list candidates.
- ❖ List of the candidates who joined within the date, vacancy position in each category before operation of waiting list.

XV. INFORMATION ON INFRASTRUCTURE AND OTHER RESOURCES AVAILABLE

LIBRARY:

- Number of Library books/Titles/Journals available (programme-wise)

S.No	Course(s)	Number of titles of the books	Number of volumes	Journals	
				National	International
1	B.E. - Mechanical Engineering	532	1047	6	3
2	B.E. – Electronics & Telecommunication Engineering	451	1090	5	2
3	B.E. – Computer Engineering	337	1022	5	1
4	B.E. – Information Technology	350	1050	5	2
	(Humanities)	324	1074	6	--

- List of online National/International Journals subscribed.
 - **Not available**
- E-Library facilities
 - **Not available**

LABORATORY:

For each Laboratory

➤ List of Major Equipment/Facilities

1) Name of Laboratory: **Physics Laboratory**Total Laboratory cost in **Rs. 79,821**

Major Equipments	Qty.
Newton's rings microscope	1
Variation of mauls law for plar polarized light with the help of photovoltaic cell.	1
e/m apparatus bar magnet method (Thomson's)	1
Digital multimeter Hand held (3 ½ Digit)	1
Determination of band gap of semiconductors diode with power supply & meter	1
Study of diodes (Ze, Si, LED, Ge)	1
An experiment based on LASER – complete set up He-Ne laser with optical bench 1 mtr. Power supply & digital current meter, digital analyzer. Following expt. Can be performed – A) Wave length measurement, B) Beam Divergence, C) Diffraction, D) polarization	1
Solar cell characteristics with digital meters	1
Resolving power of telescope A) Reading telescope a) General type b) Sup. Type c) Advance type B) Adjustable slite	1
Diffraction gratings 15000 lik per inch	1
Spectrometer st-scale Deluxe model 6" circle	1
Board with components and power supply for characteristics of photo diode (1set)	1
Table lamp with bum supquely	1

2) Name of Laboratory: **Chemistry Laboratory**Total Laboratory cost in **Rs. 1,29,926**

Major Equipments	Qty.
PH-meter Digital with inbuilt Magnetic Stirrer & Electronic buffer and unbreakable combined PH electrode withstand complete set-table model Make- Equipment-EQ614	6
Hot Air Oven with digital temperature Indicator & controller 250 degree , Accuracy 2 degree, shelfmadeup of GI wire, Inner- S S 35X35X35 cm	1
Distillation Unit barnstead type S.S. cap, 4 Lit/hr, Wall mounted open type model	1
Burette Stand- heavy base 9X5, rod -2 feet, Clamp and bosshead- full set	20

3) Name of Laboratory: **Engineering Graphics**

Total Lab. Cost in **Rs. 38,515**

Major Equipments	Qty.
Wooden Object Drawing Models - Dissected	Set
Rectangular Prism	
Triangular Prism	
Square Prism	
Pentagonal Prism	
Hexagonal Prism	
Rectangular Pyramid	
Triangular Pyramid	
Square Pyramid	
Pentagonal Pyramid	
Hexagonal Pyramid	
Cube 20 X 20 Cm	
Cone	
Cone Cut In Four Sections	
Sphere 15 Cm	
Cylinder	
Model Of Planes	Set
Triangle, Circle, Rectangle, Square, Semicircle, Hexagon, Pentagon.	
Wooden Inter Penetration Of Solid	Set
Two Cylinders Of Different Diameters Penetrating Each Other At Right Angles	
A Cone And Cylinder With Penetration At Right Angles	
Two Cones At Right Angles	
Two Square Prisms Of Different Sizes At Right Angles	
Sphere And Cone At Center	
Sphere And Cylinder Eccentric	
Sphere And Cylinder At Center	
Geometrical Instrument Box (Wooden)	1

4) Name of Laboratory: **Engg. Mechanics Laboratory**
 Total Lab. Cost in **Rs 42,390**

Major Equipments	Cost in Rs.
Bar / Compound Pendulum	1
Moment Of Inertia Of Flywheel (20 Cm Dia.) (Without Weights)	1
Curvilinear Motion Apparatus	1
Space Force Apparatus with Spring Balance (Without Weights)	1
Slotted Weight Set (Brass Nickel - 4 Weights & 1 Hanger	
5 Gms	1
10 Gms	1
20 Gms	1
50 Gms	5
100 Gms	5
200 Gms	5
500 Gms	1
Slotted Weight Hanger (Iron Painted Black)	-
500 Gms	10
1 Kg	3
2 Kg	2

5) Name of Laboratory: **Surveying Laboratory**

Total Laboratory cost in **Rs.68,780**

Major Equipments	Qty
Dumpy level with aluminum stand– Elco -Deluxe	4
Metric chain – 30 mtr.	2
Staff 4 mtr/4 section – 5mm + 1mm	4
Prismatic compass with telescopic aluminum stand	4
Cross staff with range pole	4
Line ranging glass	4
Ranging rods – 3 mtr.	20
Measuring steel tape – 15 mtr.	1
Measuring metallic tape – 15 mtr.	4
Planimeter – Digital – Labline - Deluxe	1
Arrows – set of 10	2
Auto level with aluminum stand –DSC 240 - Sohang	1

6) Name of Laboratory: Basic Electrical Laboratory
 Total Laboratory cost in Rs. 3,00,988

DESCRIPTION	QTY
DC Voltmeter (0-150 -300V), portable moving coil 150 mm uniform Scale with anti parallax mirror knife edge pointer class 1 accuracy AE Make	4Nos.
DC Ammeter (0- 5 -10A), portable moving coil 150 mm uniform Scale with anti parallax mirror knife edge pointer class 1 accuracy AE Make	4 Nos.
AC Ammeter (0- 5 -10A), portable moving coil 150 mm uniform Scale with anti parallax mirror knife edge pointer class 1 accuracy AE Make	5 Nos.
AC Voltmeter (0-300-600V), portable moving coil 150 mm uniform Scale with anti parallax mirror knife edge pointer class 1 accuracy AE Make	5 Nos.
AC Voltmeter (0-150-300V), portable moving coil 150 mm uniform Scale with anti parallax mirror knife edge pointer class 1 accuracy AE Make	4 Nos.
Single phase Wattmeter AC (5/10A, 0-150-300-600V) portable moving coil 150 mm uniform Scale with anti parallax mirror knife edge pointer class 1 accuracy AE Make	5Nos.
Single phase Wattmeter AC (1/2A, 0-150-300-600V),Low Power Factor, portable moving coil 150 mm uniform Scale with anti parallax mirror knife edge pointer class 1 accuracy AE Make	3 No.
3 phase Auto Transformer-440/0-470V,15A totally enclosed type with terminals.	1 Nos.
1 phase Auto Transformer-230/0-270V, 8A totally enclosed type with terminals.	2 Nos.
Earth Tester With Testing Kit	1 No
Single Tube Rheostat	
100 ohm,5A, 225 ohm,1.2A, 290 ohm , 2.8A,570 ohm , 1.2A	2 No each
Digital Multimeter Mecro make.	3 No
1000V, DC, 200 M Ohm, Analog Meager,	1 No
Connecting Wires GP 4 Patch Cords	50 Nos

Single phase Transformer ,tapping on both sides 230/230V,1KVA ,0%,50%,86.6%,100%	2 Nos.
Single phase Transformer ,tapping on both sides 230/230V,2KVA ,0%,50%,86.6%,100%	1 Nos.
Lamp Bank loading arrangement – 3 phase, 415V, 10A/phase with 16 controls per phase, fabricated & powder coated movable type box. Complete with terminals & accessories.	2 Nos.
Lamp Bank loading arrangement – 1 phase,230V ,10A with 20 controls, fabricated & powder coated movable type box. Complete with terminals & accessories.	2 Nos.
Transformer Rectifier Unit Input – 3 phase,415V,AC supply Output – 230C/30A DC supply Transformer with different tapings on primary with tap changing switch. With indicating LED type lamps, digital metering, switching MCB for input & output suitable enclosure & load.	1 No
Dual DC Regulated Power supply Input – 1 ph,230V,AC,50Hz Output – 0-30V/2A DC .MDE make.	4 Nos.
Mercury Vapour lamp 250V,250W with choke & fitting accessories	2 Nos.
Sodium Vapour lamp 250V,125W with choke & fitting accessories	2 Nos.
Experimental kit for Superposition Theorem	2 Nos.
Experimental kit for wiring accessories & wiring exercise.	2 Nos.
Experimental kit for R-L-C with terminal & accessories.	1 Set
Experimental kit for KCL/KVL	2 Nos.
Fabricated & powder coated AC Supply terminal boards with <ul style="list-style-type: none"> • 16A,4P,MCB - 1 No • Indicating Lamp - 3 Nos. • BTI-30 Terminals - 4 Nos. • 15/5A SS Combine - 1 No 	6 Sets
Fabricated & powder coated DC Supply terminal boards with <ul style="list-style-type: none"> • 16A,2P,MCB - 1 No • Indicating Lamp - 1 No. • BTI-30 Terminals - 2 Nos. 	4 Sets
Single phase Energy meter-single phase, 5A, 230V, 50Hz, Energy meter mounted on wooden board with input output terminals.	1 No

7) Name of Laboratory: Basic Electronics Laboratory
 Total Laboratory cost in Rs. 1,63,040

DESCRIPTION	QTY
DC Voltmeter (0-150 -300V), portable moving coil 150 mm uniform Scale with anti parallax mirror knife edge pointer class 1 accuracy AE Make	4Nos.
DC Ammeter (0- 5 -10A), portable moving coil 150 mm uniform Scale with anti parallax mirror knife edge pointer class 1 accuracy AE Make	4 Nos.
AC Ammeter (0- 5 -10A), portable moving coil 150 mm uniform Scale with anti parallax mirror knife edge pointer class 1 accuracy AE Make	5 Nos.
AC Voltmeter (0-300-600V), portable moving coil 150 mm uniform Scale with anti parallax mirror knife edge pointer class 1 accuracy AE Make	5 Nos.
AC Voltmeter (0-150-300V), portable moving coil 150 mm uniform Scale with anti parallax mirror knife edge pointer class 1 accuracy AE Make	4 Nos.
Single phase Wattmeter AC (5/10A, 0-150-300-600V) portable moving coil 150 mm uniform Scale with anti parallax mirror knife edge pointer class 1 accuracy AE Make	5Nos.
Single phase Wattmeter AC (1/2A, 0-150-300-600V),Low Power Factor, portable moving coil 150 mm uniform Scale with anti parallax mirror knife edge pointer class 1 accuracy AE Make	3 No.
3 phase Auto Transformer-440/0-470V,15A totally enclosed type with terminals.	1 Nos.
1 phase Auto Transformer-230/0-270V, 8A totally enclosed type with terminals.	2 Nos.
Earth Tester With Testing Kit	1 No
Single Tube Rheostat	
100 ohm,5A,	2 No
225 ohm,1.2A,	2 No
290 ohm , 2.8A	2 No
570 ohm , 1.2A	2 No
digital Multimeter Meeco make.	3 No
1000V, DC, 200 M Ohm, Analog Meager,	1 No

Connecting Wires GP 4 Patch Cords	50 Nos
Single phase Transformer ,tapping on both sides 230/230V,1KVA ,0%,50%,86.6%,100%	2 Nos.
Single phase Transformer ,tapping on both sides 230/230V,2KVA ,0%,50%,86.6%,100%	1 Nos.
Lamp Bank loading arrangement – 3 phase, 415V, 10A/phase with 16 controls per phase, fabricated & powder coated movable type box. Complete with terminals & accessories.	2 Nos.
Lamp Bank loading arrangement – 1 phase,230V ,10A with 20 controls, fabricated & powder coated movable type box. Complete with terminals & accessories.	2 Nos.
Transformer Rectifier Unit Input – 3 phase,415V,AC supply Output – 230C/30A DC supply Transformer with different tapings on primary with tap changing switch. With indicating LED type lamps, digital metering, switching MCB for input & output suitable enclosure & load.	1 No
Dual DC Regulated Power supply Input – 1 ph,230V,AC,50Hz Output – 0-30V/2A DC .MDE make.	4 Nos.
Mercury Vapour lamp 250V,250W with choke & fitting accessories	2 Nos.
Sodium Vapour lamp 250V,125W with choke & fitting accessories	2 Nos.
Experimental kit for Superposition Theorem	2 Nos.
Experimental kit for wiring accessories & wiring exercise.	2 Nos.
Experimental kit for R-L-C with terminal & accessories.	1 Set
Experimental kit for KCL/KVL	2 Nos.
Fabricated & powder coated AC Supply terminal boards with <ul style="list-style-type: none"> • 16A,4P,MCB - 1 No • Indicating Lamp - 3 Nos. • BTI-30 Terminals - 4 Nos. • 15/5A SS Combine - 1 No 	6 Sets
Fabricated & powder coated DC Supply terminal boards with <ul style="list-style-type: none"> • 16A,2P,MCB - 1 No • Indicating Lamp - 1 No. • BTI-30 Terminals - 2 Nos. 	4 Sets
Single phase Energy meter-single phase, 5A, 230V, 50Hz, Energy meter mounted on wooden board with input output terminals.	1 No

8) Name of Laboratory: **Basic Mechanical Engineering**
 Total Laboratory cost in **Rs. 83,872**

Item	Qty
Model Of Babcock & Wilcox Boiler	1
Model Of Lancashire Boiler	1
Cut Section Model Of 2-Stroke Petrol Engine	1
Cut Section Model Of 4-Stroke Petrol Engine	1
Cut Section Model Of 4-Stroke Diesel Engine	1
Model Of Muff Coupling	1
Model Of Split Muff Coupling	1
Model Of Flange Coupling	1
Model Of Flexible Coupling	1
Model Of Hook's Coupling	1
Model Of Oldham Coupling	1
Model Of Claw Clutch	1
Model Of Conical Clutch	1
Model Of Plate Clutch	1
Model Of Centrifugal Clutch	1
Model Of Multi Plate Clutch	1
Model Of Single Shoe Brake	1
Model Of Double Shoe Brake	1
Model Of Band Brake	1
Model Of Band And Block Brake	1
Model Of Internal Expanding Brake	1
Model Of Spur Gear	1
Model Of Bevel Gear	1
Model Of Spiral Gear	1
Model Of Helical Gear	1
Model Of Worm Gear	1
Model Of Rack And Pinion	1
Model Of Keys (Set Of 5 Keys)	1
Model Of Chain Drive	1
Model Of V Belt Drive	1
Model Of Rope Belt Drive	1
Bearing Set-Ball, Roller, Taper, Thrust.	1

➤ List of Experimental Setup
 (**Annexure -1.2**)

COMPUTING FACILITIES:

Particulars	Requirements as per Norms (1:4 all undergraduate UG Programmes and 1:2 for MBA/MCA/ PGDM/ PGDBM)	Availability
No of Computer terminals	1: 2 for MBA 1:4 for others 60	60
Hardware Specification	P-4 Processor	Yes
No of terminals of LAN/WAN	50 percent of the number of terminals 30	60
Relevant Legal Software	Application Software & 4 Application Software packages. At least 2 System Software	System 2 – System Softwares 4 –Application Softwares
Peripheral(s)/ Printers	Printer to Computer 06 Terminal ratio =1: 10	06
Internet Accessibility (in kbps & hrs)	250 MB download 512 Kbps Speed (Internet 400). Hughes Communication India Ltd. Direct Way Broadband VSAT HN7000S IDU KU Band Outdoor Digital Radio Unit / RG11 cable 1.2m Reflector with mounting stand	

WORKSHOP:
Black Smithy section

Item	Qty
Leg Vice (6")	2
C.I. Anvil (100 Kg)	2
Swage Block (12"x12"x5")	1
Sledge Hammer with Handle (3 lbs.)	5
Flat Tong (18")	5
Round hollow tong (18")	5
Square hollow tong (18")	5
Pick up tong (18")	2
Flatter (3")	2
Hot Chisel (6")	2
Cold Chisel (6")	2
Black smithy Furnace (1 x 1 x1 Mtr) In M.S. Frame-50 x50 x 5 mm M.S. Sheet Shrouding For Exhaust Gas collector, Electric Blower For Each Furnace, And Separate G.I. ducting for each furnace.	2

Fitting Shop

Name of the equipment	No.of units
Needle file set (12 pcs set)	1
Tap wrench (Samrat 12")	5
HSS drill (Miranda dia. 10.5 mm)	10
Round die with handle (M6)	2
Centre punch (Taparia 4")	10
V block (Samrat) 100 mm x 75mmx75 mm	1
Vernier Height guage (Mitutoyo 12")	1
Vernier Caliper (6")	5
Micrometer (0-25)	1
Micrometer (25-50)	1
Micrometer (50- 75)	1
Ball peen hammer (675 gm)	5
Inside spring caliper (Samrat 0")	2
Oil Can (Prima 1/2 lit)	5
Open ended spanner set (Taparia 6-32mm)	1
Adjustable Spanner Set (Taparia 12")	2
Ring Spanner set (6-32 mm)	1
Diamond dresser (0.5CRT)	1
Try square 6"	25
Try square 10"	25

Carpentry section

Name of the equipment	Qty
Portable Drilling machine (Kpt-13mm)	1
Half Round rasp file with handle (12")	25
Round rasp file with handle (12")	10
Pincer (Taparia 8")	5
Plier (8")	2
Screw Driver with tester set (831 no.)	1
Triangular smooth file for saw setting (5")	5
Steel rule (Kirstel 12")	100
Jigsaw Make Hitachi	1
Planar Make Hitachi	1
Sandar 4" Make Hitachi	1
Router Make Hitachi	1
Hacksaw frame	6

MACHINERY IN WORKSHOP

Name of the equipment	Qty
One Number Brand New Indian make "Umiya "Brand 6' Wood Turning Lathe Machine complete with std accessories without motor as per makers practice	2
Extra for 1HP 3Ph 1440 RPM Motor	2
One Number Brand New Indian make "Primie(Brand cap. 20mm Drilling Machine with 1 HP 3Ph 1440 RPM electric motor, pulley, Belt complete as per maker Practice	1
One Number Brand New Indian make 'SUPER" Brand 0.75HP 3Ph 2800 RPM Bench Grinder with Wheel complete as per makers practice	1
One Number Brand New Indian make MMT Brand 300 Amps I & III Phase Welding Machine complete as per makers practice	2
One Number Brand New Indian make "Hyrobend" Brand 1/2 to 2"cap. Pipe Bending Machine complete with dies as per makers Practice	1
One Number Brand New Indian make "MMT' Brand 12" cap. Heavy Duty Hand Shearing Machine complete as per makers Practice	1

One Number Brand New Indian make "Turner "Brand 4 1/2" all geared Medium Duty Lathe Machine with Harden Bed, Nitride Gears, Norton Gear Box with separate feed shaft thread shaft, Splash guard & R/F switch Bed width 11" Height of Center 7" Spindle Bore 1.1/2" (Threaded) with 2HP 3Ph 1440 RPM Electric Motor Pulley Belt switch & all std. Accessories complete as per makers practice	1
Extra for 8" True Chuck	-
One Number Brand New Indian make MMT'Brand 1/20Z Plastic Moulding Machine complete as per makers practice.	2
One Number Brand New Indian make 'Unique" Brand U.301 5"cap. Bench Vice complete as per makers practice.	40
One Number Brand New Indian make "Unique" Brand Drill Machine Vice 6" cap. complete as per makers practice.	2
One Number Brand New Indian make "GMT" Brand 400"400 mm cap. Surface Plate complete as per makers practice	1
One Number Brand New Indian make 'Unique" Carpentry Vice	25

Welding Section

Name of the equipment	Qty
Chipping hammer	10
Welding goggle	20
Welding rods (pack 3.15 mm)	1
Cable 25 sq mm Copper (in Mtr)	20
safety hand gloves	30
Earthing plate (ms) 8' x 4'	1
Electrode holder 600 amp	8
Welding Table	3
Steel Cabinet	6

- List of facilities available.
 - Games and Sports Facilities
 - **Yes**
 - Extra Curriculum Activities
 - **Yes**
 - Soft Skill Development Facilities
 - **Yes**
 - Number of Classrooms and size of each
 - **3 class rooms each of size 82.73 Sq mt.**
 - Number of Tutorial rooms and size of each
 - **2 rooms of size 44.94 Sq.M.**
 - Number of laboratories and size of each
 - **8 Laboratories and size of each 100.02 Sq. M.**
 - Number of drawing halls and size of each
 - **180.88 Sq. M.**
 - Number of Computer Centre with capacity of each
 - **One computer centre with 161.9 Sq. mt..**
 - Central Examination Facility, Number of rooms and capacity of each.
 - **Yes**

Teaching Learning process

- Curricula and syllabi for each of the programmes as approved by the University.
 - **Yes (Annexure-1.3)**
- Academic Calendar of the University
 - **Yes (Annexure-1.4)**
- Academic Time Table
 - **Yes (Annexure-1.5)**
- Teaching Load of each Faculty
 - **Yes (Annexure-1.6)**
- Internal Continuous Evaluation System and place
 - **Yes**
- Students' assessment of Faculty, System in place.
 - **Yes**

For each Post Graduate programme give the following:

Not Applicable because only Undergraduate programmes are carried out.